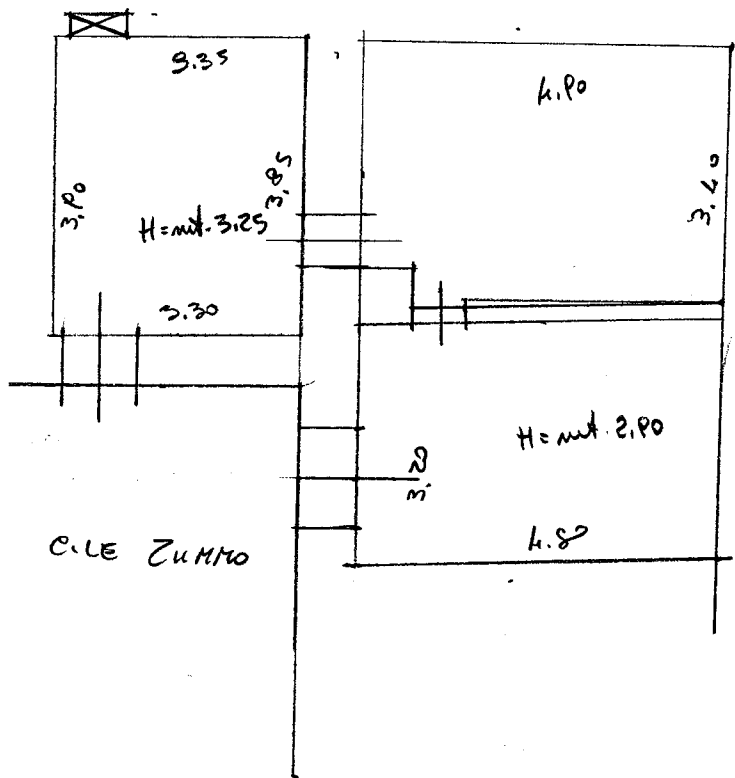


PIANO TERRA



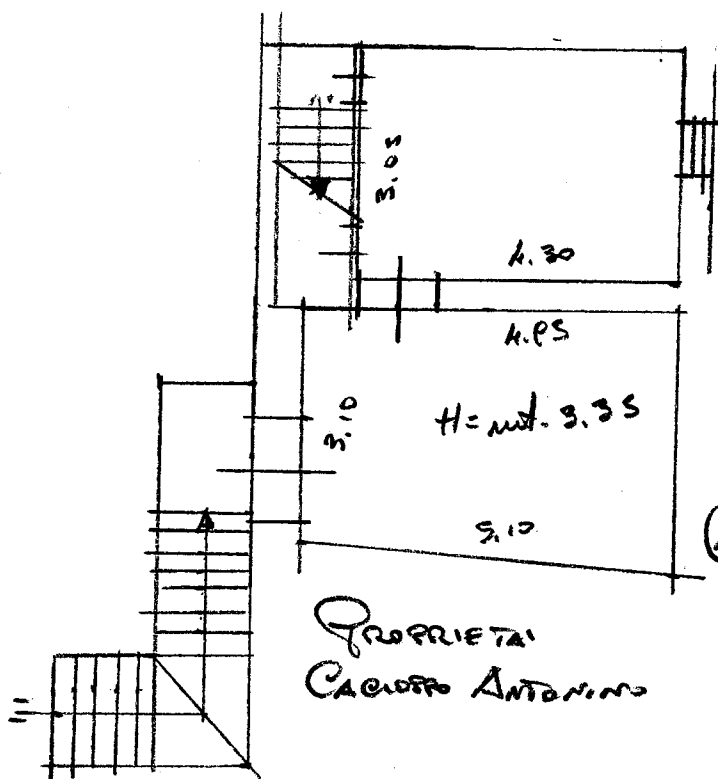
Sup. Coperte e P.T.
 $(9.35 \times 5.00) + (2.60 \times 5.75) =$
 $= \text{MC. } 61.70$

$\text{MC. } 17.50 \times 3.45 = \text{MC. } 60.37$
 $\text{MC. } 44.20 \times 3.10 = \text{MC. } 137.02$
MC. 197.39

16.75



PIANO PRIMO



$(6.00 \times 7.10) \times 3.55 =$
 $= \text{MC. } 151.23$

PROPRIETA' N. 1000 V. 70

PROPRIETA'
 CACIOPPO ANTONINO