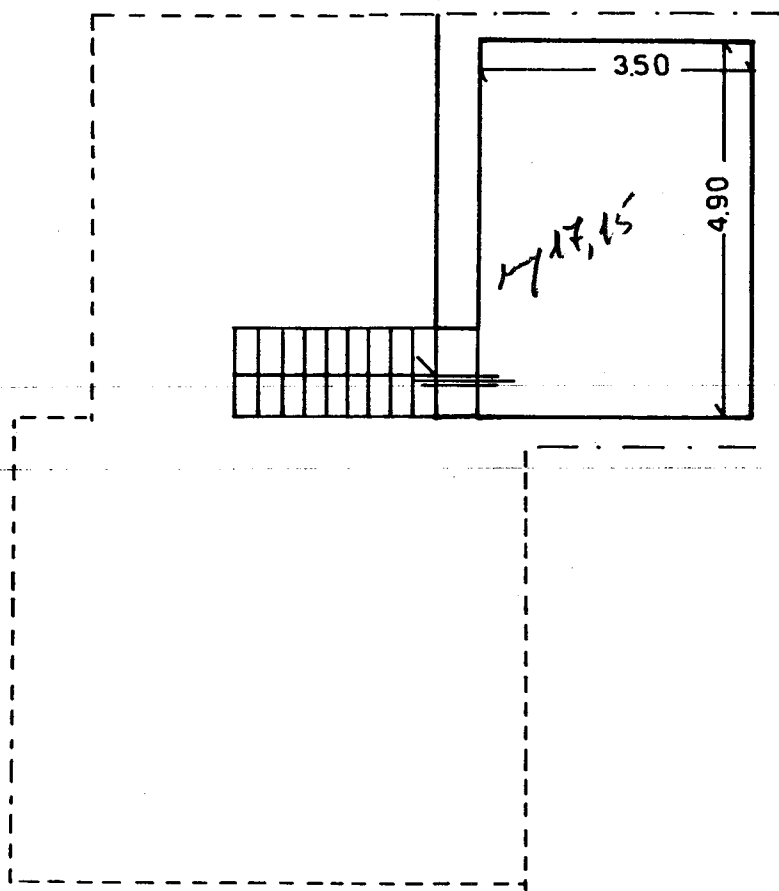


$mq\ 28,16 \times 2,80 \rightarrow mc\ 78,85$ 
 $\quad$ 
 $Total\ mq\ 66,31 \times €110,00 = €7294,10$   
 $mq\ 22,00 \times \frac{5,30+4,30}{2} = mc\ 100,08$   
 $\quad\quad\quad mc\ 178,92$



CORTILE FERRARA

PIANTA P. PRIMO

$$17,15 \times 4,00 = 68,60$$